

INSTRUMENT
APPROACH
CHART - ICAO

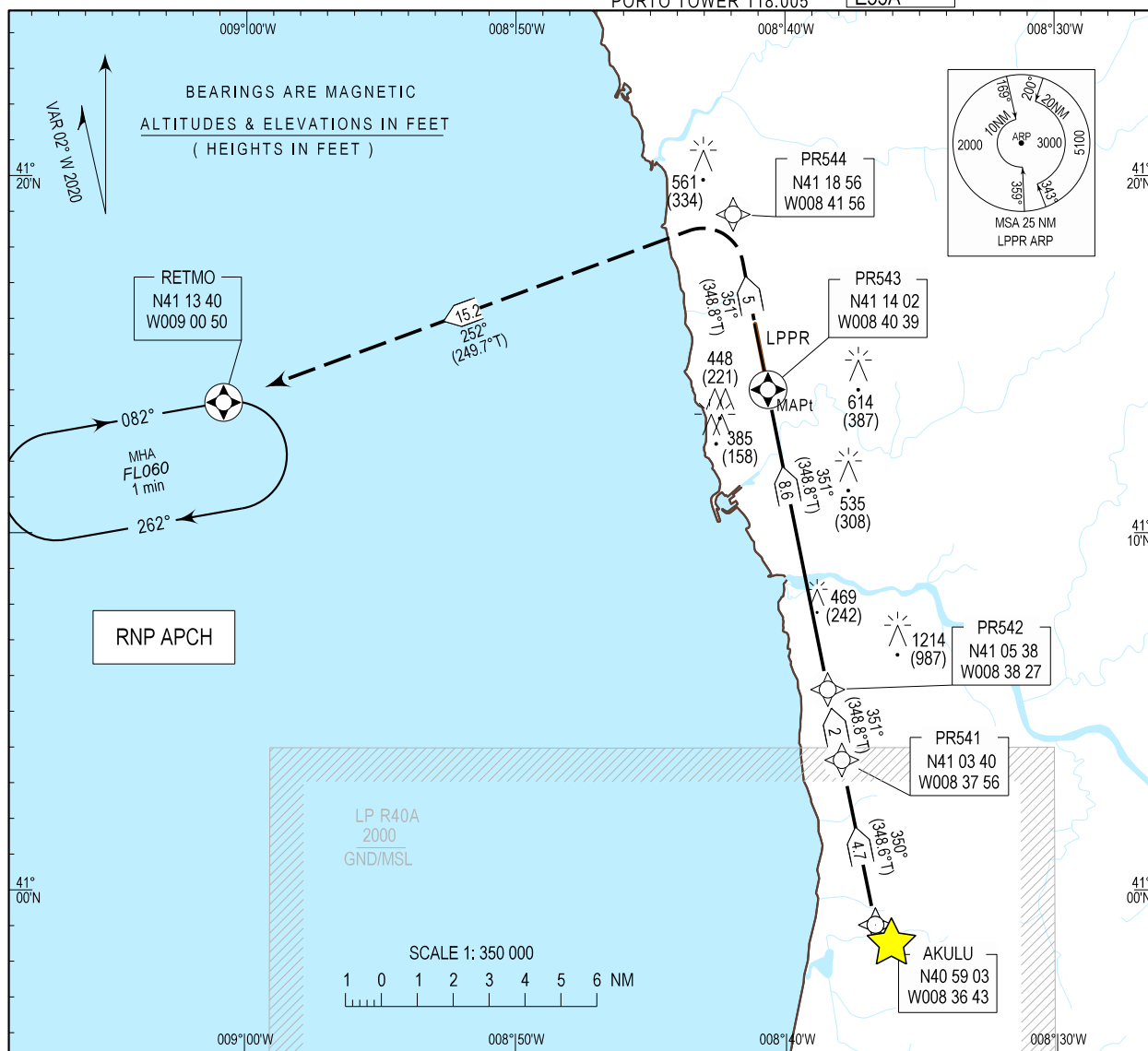
AD ELEV 227 ft
HEIGHTS RELATED
THR RWY 35 - ELEV 227 ft

PORTO ARR INFORMATION 124.305
PORTO APPROACH 120.910
PORTO TOWER 118.005

PORTO, Francisco Sá Carneiro (LPPR)

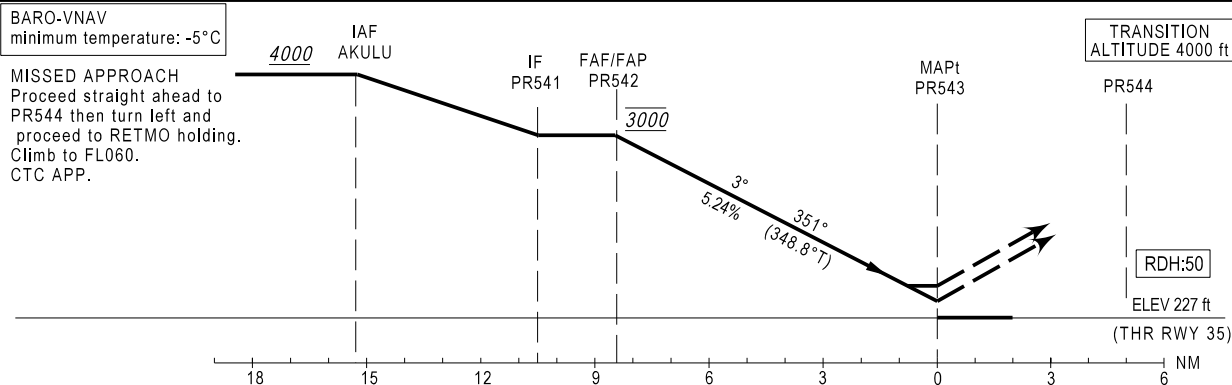
EGNOS
CH 92 423
E35A

RNP RWY35



BARO-VNAV
minimum temperature: -5°C

MISSSED APPROACH
Proceed straight ahead to
PR544 then turn left and
proceed to RETMO.
Climb to FL060.
CTC APP.



CAT	LPV		NAV/VNAV		LNAV		CIRCLING RWY35		FAP/FAP-THR35	8.6	8	7	6	5	4	3	2	1
	DA/H	OCH	DA/H	OCH	MDA/H	OCH	WEST	EAST										
							MDA/H	MDA/H										
A	480 (253)	196	500 (273)	264	540 (313)	311	950 (723)	950 (723)	Altitude (Height)	3000 (2773)	2824 (2597)	2506 (2279)	2187 (1960)	1869 (1642)	1551 (1324)	1232 (1005)	914 (687)	595 (368)
B	480 (253)	206	510 (283)	280	540 (313)	311	950 (723)	950 (723)										
C	480 (253)	216	530 (303)	296	540 (313)	311	950 (723)	1280 (1053)										
D	480 (253)	226	540 (313)	310	540 (313)	311	950 (723)	1280 (1053)										

Rate of descend (5.2%)	kt	80	100	120	140	160	180	200
ft/min	420	525	630	730	835	940	1045	

AD name inserted, new ATIS FREQ.

Instrument Approach Procedure Coding Table
RNP RWY 35

Path Terminator	Waypoint				Course/Track MAG (True)	Dist NM	Turn Direction	Altitude	Speed	RNP Value NM	Navigation Specification	Remarks
	Identifier	Type	Flyover	Coordinates								
IF	AKULU	IAF	-	405903.00N 0083643.00W	-	-	-	+4000	-	1.0	RNP APCH	-
TF	PR541	IF	-	410339.64N 0083756.48W	350 (348.6)	4.70	-	+3000	-	1.0	RNP APCH	-
TF	PR542	FAF/FAP	-	410538.03N 0083827.35W	350 (348.8)	2.01	-	@3000	-	1.0	RNP APCH	-
TF	PR543	MAPT (LNAV only)	Y	411401.99N 0084039.13W	350 (348.8)	8.56	-	-	-	0.3	RNP APCH	-
TF	PR544	MATF	-	411856.44N 0084156.39W	350 (348.8)	5.00	L	-	-	1.0	RNP APCH	-
TF	RETMO	MAHP	Y	411340.07N 0090049.71W	252 (249.8)	15.19	-	FL060	-	1.0	RNP APCH	-

HLDG ID	INBD TR (MAG)	Direction of PTN	MAX IAS (KT)	MNM-MAX HLDG LVL FL/FT (MSL)	TIME (MIN) or DIST OUBD	Controlling Unit
1	2	3	4	5	6	7
RETMO 411340N 0090050W	082	RIGHT	230	FL060 FL 140	1 min	RNAV Porto TWR

Input data

Operation Type	0
SBAS Provider	1
Airport Identifier	LPPR
Runway	35
Runway Direction	0
Approach Performance Designator	0
Route Indicator	
Reference Path Data Selector	0
Reference Path Identifier	E35A
LTP/FTP Latitude	411401.9855N
LTP/FTP Longitude	0084039.1275W
LTP/FTP Ellipsoidal Height (metres)	124.1
FPAP Latitude	411547.9435N
Delta FPAP Latitude (seconds)	105.9580
FPAP Longitude	0084106.9160W
Delta FPAP Longitude (seconds)	-27.7885
Threshold Crossing Height	15.0
TCH Units Selector	1
Glidepath Angle (degrees)	3.00
Course Width (metres)	105.00
Length Offset (metres)	0
HAL (metres)	40.0
VAL (metres)	50.0

Output data

Data Block	10 12 10 10 0C 23 00 00 01 35 33 05 03 17 B2 11 51 A8 46 FC D9 18 CC 3B 03 E7 26 FF 2C 81 2C 01 64 00 C8 FA 6C D1 BE 7D
Calculated CRC Value	6CD1BE7D

Required Additional Data

ICAO Code	PT
LTP/FTP Orthometric Height (metres)	69.2
FPAP Orthometric Height (metres)	69.2